



We provide superior performing compressed air & gas systems with engineered longevity to reduce operating costs and improve productivity.



ENGINEERED FOR SUPERIOR PERFORMANCE

Compressed Air & Gas Systems



Corporate Headquarters -
AIRpipe CHINA

Tel: +86 574 5587 6761
 Fax: +86 574 8788 5151
 No.18 MoGanShan Road, BeiLun District, NingBo, China 315800
 Email: info@airpipetech.com
 Web: www.airpipetech.com



Publication AIRpipe – #772018/EN/AP
 AIRpipe reserves the rights to modify this documents without prior notice.



AIRpipe specializes in solutions for compressed air and fluids distribution. Through out the last 12 years, we have continued to invest in R&D, by taking into account market feedback and real-world conditions, our technology has gone through several stages of evolution. Today the new generation of products are engineered to be the most superior products available.

More than 31,000m2 layout, 100% ownership of manufacturing plants, R&D center, office, logistic center. We're committed to your total solution provider for products, system design, engineering proposal and installations.

Our products are utilized globally for all compressed air, inert gas, and fluid applications.



Superior Reliability & Longevity

- Highly durable materials resistant to corrosion, vibration, thermal variation, and outdoor weather conditions.
- Metal clamshell connectors for all diameters are stronger and more durable versus polymer fittings.
- Unique grab ring design (20-50mm) and lugged ring (63-200mm) allows for zero risk of disconnection.
- Patented active concentric seals provide leak free performance, even in high vibration applications. Seal lifespan is double that of industry competitors.



Energy & Cost Savings

- The smooth interior design and high-flow connectors ensures a constant supply of clean air at a reduced pressure drop, resulting in significant energy savings.
- Guaranteed leak-free performance and superior longevity versus traditional pipe systems.

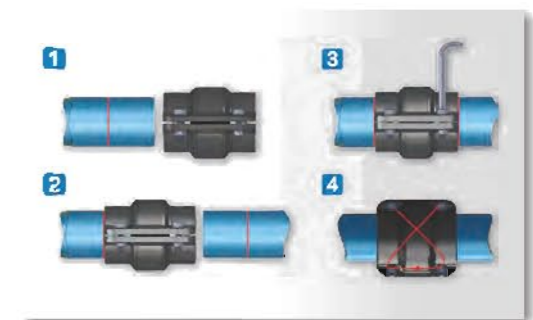
Quick & Easy Modular Installation

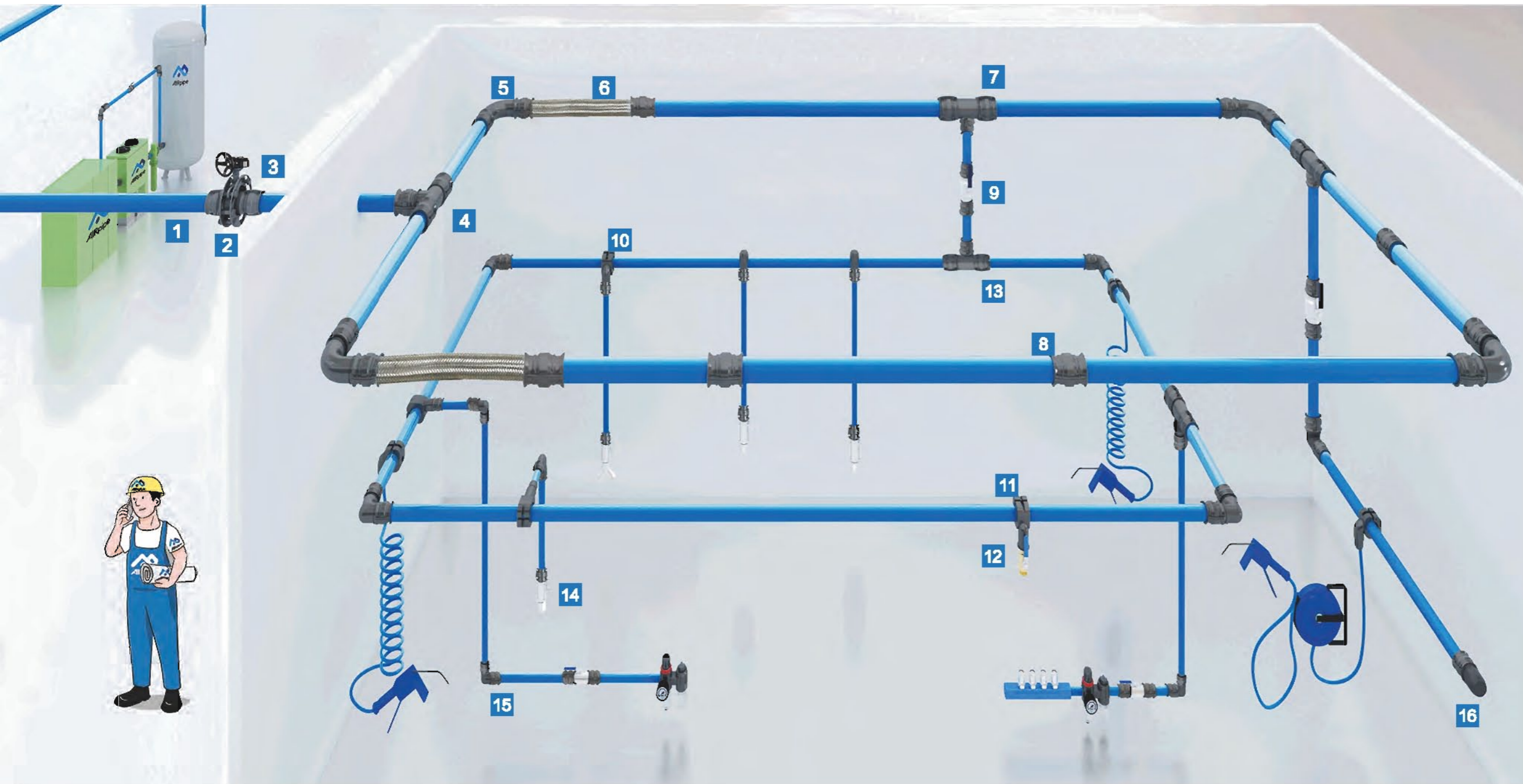
- Complete range of pipe, fittings and accessories works easily for new projects renovations & extensions.
- Requires no special tooling, welding, gluing, brazing, soldering, or thread cutting.
- Reusable, lightweight, and modular design allows for easy modifications.
- Quick drops can be added at any time to create new points of use.



Dual Performance

- Surface contact and active sealing
- Working Pressure up to 16bar
- 20 year life





- 1** Aluminum Pipe
- 2** Flanged Connector
- 3** Quick Connect Butterfly Valve
- 4** Equal Tee

- 5** Aluminum 90 Degree Elbow
- 6** Flexible Hose
- 7** Reducer Tee
- 8** Pipe to Pipe Connector

- 9** Quick Plug Ball Valve
- 10** Aluminum Quick Drop
- 11** Quick Drop (Female Thread)
- 12** Brass Ball Valve

- 13** Quick Plug Equal Tee
- 14** Thread Quick Plug Ball Valve
- 15** Quick Plug 90 Elbow
- 16** Aluminum End Cap

Product Range & Features

Rigid Aluminum Pipe



- Up to max.200mm diameter - 200m³/min flow single line.
- High-quality powder coating and colors customization.
- Designed for compressed air, vacuum, and inert gases.
- Light-weight & corrosion-free.

Pipe Connectors



- Quick-connect design.
- Superior reliability & longevity.
- Largest fitting configurations available.
- Modular & reusable.
- 100% recyclable & non-flammable materials.

Quick Drop Fittings



- Quick installation to main ring.
- Can be used vertically or horizontally.
- Design does not allow water to enter downstream points of use.
- Configurations allow for multiple drop connection types, e.g., hose reels.

Ball & Butterfly Valves



- Quick connection.
- Available for BSP/NPT thread, flange, plug-in connection type.
- High-flow design ensures optimal performance.

Flexible Hoses



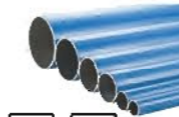
- Suitable for compressor & equipment outlets to absorb vibration.
- Allows for expansion and contraction of the pipe system.
- Bypass obstacles for pipe distribution.
- Resistant to mineral or synthetic lubricated oils.

Tools & Accessories



- Suitable for various pipe systems.
- Used for a variety of installation methods, e.g., wall, beam, roof, channel, rod, etc.
- Designed to work best with AIRpipe products.

BLUE ALUMINUM PIPE



5.8M Length

AIRpipe	DN	OD	ID
301 00 0100 01	20	20.1	17.5
301 00 0200 01	25	25.1	22.5
301 00 0400 01	40	40.1	38.5
301 00 0500 01	50	50.1	45.7
301 00 0600 01	63	67.6	63.0
301 00 0700 01	80	84.8	80.0
301 00 0800 01	100	101.8	96.8
301 00 0900 01	150	153.0	147.5
301 00 1000 01	200	205.0	197.8

* 2.9M length please contact local sales.

GREEN ALUMINUM PIPE



5.8M Length

AIRpipe	DN	OD	ID
301 00 0100 03	20	20.1	17.5
301 00 0200 03	25	25.1	22.5
301 00 0400 03	40	40.1	36.5
301 00 0500 03	50	50.1	45.7
301 00 0600 03	63	67.6	63.0
301 00 0700 03	80	84.8	80.0
301 00 0800 03	100	101.8	96.8
301 00 0900 03	150	153.0	147.5
301 00 1000 03	200	205.0	197.8

* 2.9M length please contact local sales.

EQUAL 90° ELBOW



AIRpipe	DN	DN
302 03 0100 02	20	20
302 03 0200 02	25	25
302 03 0400 02	40	40
302 03 0500 02	50	50

*Union connectors Included

302 03 0600 01	63	63
302 03 0700 01	80	80
302 03 0800 01	100	100
302 03 1000 01	150	150
302 03 1100 01	200	200

*Use two union connectors

EQUAL 45° ELBOW



AIRpipe	DN	DN
302 04 0100 02	20	20
302 04 0200 02	25	25
302 04 0400 02	40	40
302 04 0500 02	50	50

*Union connectors included

302 04 0600 01	63	63
302 04 0700 01	80	80
302 04 0800 01	100	100
302 04 1000 01	150	150
302 04 1100 01	200	200

*Use two union connectors

GRAY ALUMINUM PIPE



5.8M Length

AIRpipe	DN	OD	ID
301 00 0100 02	20	20.1	17.5
301 00 0200 02	25	25.1	22.5
301 00 0400 02	40	40.1	36.5
301 00 0500 02	50	50.1	45.7
301 00 0600 02	63	67.6	63.0
301 00 0700 02	80	84.8	80.0
301 00 0800 02	100	101.8	96.8
301 00 0900 02	150	153.0	147.5
301 00 1000 02	200	205.0	197.8

* 2.9M length please contact local sales.

END CAP



AIRpipe	DN	DN
302 06 0100 02	20	20
302 06 0200 02	25	25
302 06 0400 02	40	40
302 06 0500 02	50	50

*Union connector Included

302 06 0600 01	63	63
302 06 0700 01	80	80
302 06 0800 01	100	100
302 06 1000 01	150	150
302 06 1100 01	200	200

*Use one union connector

REDUCING TEE



AIRpipe	DN	DN
302 07 0201 02	25	20
302 07 0402 02	40	25
302 07 0502 01	50	25
302 07 0504 02	50	40
302 07 0604 02	63	40
302 07 0605 02	63	50
302 07 0704 02	80	40
302 07 0705 02	80	50
302 07 0805 02	100	50

*Union connectors size below 63 included

302 07 0708 01	80	63
302 07 0808 02	100	63
302 07 0807 02	100	80
302 07 1006 01	150	63
302 07 1007 01	150	80
302 07 1008 01	150	100
302 07 1108 01	200	63
302 07 1107 01	200	80
302 07 1108 01	200	100
302 07 1110 01	200	150

*Use three union connectors

LATERAL REDUCING TEE



AIRpipe	DN	DN
302 12 0807 01	100	80
302 12 1007 01	150	80
302 12 1008 01	150	100
302 12 1108 01	200	100
302 12 1110 01	200	150

*Use three union connectors

EQUAL PIPE TO PIPE CONNECTORS



AIRpipe	DN	DN
302 02 0100 01	20	20
302 02 0200 01	25	25
302 02 0400 01	40	40
302 02 0500 01	50	50
302 02 0601 05	63	63
302 02 0701 08	80	80
302 02 0801 08	100	100
302 02 1001 05	150	150
302 02 1101 05	200	200

EQUAL TEE



AIRpipe	DN	DN
302 05 0100 02	20	20
302 05 0200 02	25	25
302 05 0400 02	40	40
302 05 0500 02	50	50

*Union connectors included

302 05 0600 01	63	63
302 05 0700 01	80	80
302 05 0800 01	100	100
302 05 1000 01	150	150
302 05 1100 01	200	200

*Use three union connectors

REDUCING PIPE TO PIPE CONNECTORS



AIRpipe	DN	DN
302 21 0201 02	25	20
302 21 0402 02	40	25
302 21 0502 02	50	25
302 21 0504 02	50	40
302 21 0604 02	63	40
302 21 0605 02	63	50
302 21 0705 02	80	50

*Union connectors size below 63 included

302 21 0706 01	80	63
302 21 0808 01	100	63
302 21 0807 01	100	80
302 21 1007 01	150	80
302 21 1008 01	150	100
302 21 1110 01	200	150

*Use two union connectors

LATERAL EQUAL TEE



AIRpipe	DN	DN
302 09 0600 01	63	63
302 09 0700 01	80	80
302 09 0800 01	100	100
302 09 1000 01	150	150
302 09 1100 01	200	200

*Use three union connectors

ALUMINUM JOINT FEMALE THREAD



AIRpipe	BSP	DN
302 19 0100 02	20	1/2"
302 19 0101 02	20	3/4"
302 19 0200 02	25	1/2"
302 19 0202 02	25	1"
302 19 0404 02	40	1 1/2"
302 19 0505 02	50	2"

*Union connector included

302 19 0606 01	63	2 1/2"
302 19 0707 01	80	3"

*Use one union connector

ALUMINUM JOINT MALE THREAD



AIRpipe	BSP	DN	SIZE
302 17 0100 02	20	1/2"	
302 17 0101 02	20	3/4"	
302 17 0200 02	25	1/2"	
302 17 0201 02	25	3/4"	
302 17 0202 02	25	1"	
302 17 0402 02	40	1"	
302 17 0403 02	40	1 1/4"	
302 17 0404 02	40	1 1/2"	
302 17 0405 01	40	2"	
302 17 0504 02	50	1 1/2"	
302 17 0505 02	50	2"	

*Union connector Included



302 17 0605 01	63	2"
302 17 0806 01	63	2 1/2"
302 17 0706 01	80	2 1/2"
302 17 0707 01	80	3"

*Use one union connector

QUICK DROP



AIRpipe	DN	DN
302 10 0804 01	100	40
302 10 1004 01	150	40
302 10 1005 01	150	50
302 10 1104 01	200	40
302 10 1105 01	200	50

*Union connector included

QUICK DROP



AIRpipe	DN	DN
302 10 0201 04	25	20
302 10 0202 03	25	25
302 10 0401 04	40	20
302 10 0402 04	40	25
302 10 0501 01	50	20
302 10 0502 01	50	25
302 10 0601 01	63	20
302 10 0802 01	63	25
302 10 0701 01	80	20
302 10 0702 01	80	25
302 10 0801 01	100	20
302 10 0802 01	100	25
302 10 1001 01	150	20
302 10 1002 01	150	25
302 10 1102 01	200	25

*Union connector included

ALUMINUM ELBOW MALE



AIRpipe	BSP	DN	SIZE
302 15 0100 01	20	1/2"	
302 15 0101 01	20	3/4"	
302 15 0200 01	25	1/2"	
302 15 0202 01	25	1"	
302 15 0404 01	40	1 1/4"	
302 15 0505 01	50	2"	

*Union connector Included

ALUMINUM ELBOW FEMALE



AIRpipe	BSP	DN	SIZE
302 13 0100 01	20	1/2"	
302 13 0101 01	20	3/4"	
302 13 0200 01	25	1/2"	
302 13 0202 01	25	1"	
302 13 0404 01	40	1 1/4"	
302 13 0505 01	50	2"	

*Union connector Included

QUICK DROP FEMALE THREAD



AIRpipe	BSP	DN	SIZE
302 11 0200 03	25	1/2"	
302 11 0400 03	40	1/2"	
302 11 0401 03	40	3/4"	
302 11 0500 01	50	1/2"	
302 11 0501 01	50	3/4"	
302 11 0600 01	63	1/2"	
302 11 0601 01	63	3/4"	
302 11 0700 01	80	1/2"	
302 11 0701 01	80	3/4"	
302 11 0800 01	100	1/2"	
302 11 1000 01	150	1/2"	

QUICK CONNECT VALVE MALE THREAD



AIRpipe	DN	BSP
302 52 0103 03	20	3/4"
302 52 0203 03	25	1"
302 52 0403 03	40	1 1/2"
302 52 0503 03	50	2"
302 52 0603 01	63	2 1/2"

*Union connector included
*Directly connect to outlet valve of air compressor, dryer, filter

QUICK CONNECT BALL VALVE



AIRpipe	DN
302 52 0100 03	20
302 52 0200 03	25
302 52 0400 03	40
302 52 0500 03	50
302 52 0600 02	63

*Union connectors Included

VALVED WALL BRACKET FEMALE THREAD



AIRpipe	DN	BSP	PORT
302 52 0102 03	20	1 PORT	1/2"
302 52 0202 03	25	1 PORT	1"
302 52 0204 03	25	1 PORT	1/2"
302 52 0404 03	40	1 PORT	1 1/2"
302 52 0505 03	50	1 PORT	2"
302 52 0606 01	63	1 PORT	2 1/2"

*Union connector Included



AIRpipe	DN	BSP	PORTS
302 52 0101 03	20	2 PORTS	1/2"
302 52 0201 03	25	2 PORTS	1/2"

*Union connector Included



AIRpipe	DN	BSP	PORTS
302 52 0105 03	20	2 PORTS	1/2", 75°
302 52 0205 03	25	2 PORTS	1/2", 75°

*Union connector Included

BRASS BALL VALVE



AIRpipe	BSP
302 73 0000 02	1/2"
302 73 0100 02	3/4"
302 73 0200 02	1"
302 73 0400 02	1 1/2"
302 73 0500 02	2"

FEMALE

302 73 0000 02	1/2"
302 73 0100 02	3/4"
302 73 0200 02	1"
302 73 0400 02	1 1/2"
302 73 0500 02	2"

MALE

302 73 0001 02	1/2"
302 73 0101 02	3/4"

MALE/FEMALE

302 73 0002 02	1/2"
302 73 0102 02	3/4"

NON-VALVED WALL BRACKETS



AIRpipe	BSP	DN	PORTS
302 23 0101 01	20	45°one port	1/2"
302 23 0201 01	25	45°one port	1/2"
302 23 0100 01	20	45°two ports	1/2"
302 23 0200 01	25	45°two ports	1/2"

SWING CHECK VALVE



AIRpipe	BSP	DN	Type
302 80 0400 02	40	Cast iron	
302 80 0500 02	50	Cast iron	

*Union connectors Included

302 80 0600 01	63	Cast iron
302 80 0700 01	80	Cast iron
302 80 0800 01	100	Cast iron
302 80 1000 01	150	Cast iron
302 80 1100 01	200	Cast iron

*Use two union connectors

AIRpipe	BSP	DN	Type
302 80 0401 02	40	Stainless steel	
302 80 0501 02	50	Stainless steel	

*Union connectors included

302 80 0601 01	63	Stainless steel
302 80 0701 01	80	Stainless steel
302 80 0801 01	100	Stainless steel
302 80 1001 01	150	Stainless steel
302 80 1101 01	200	Stainless steel

*Use two union connectors

BUTTERFLY VALVE



AIRpipe	BSP	DN	Type
302 51 0700 01	80	Cast iron	
302 51 0800 01	100	Cast iron	
302 51 1000 01	150	Cast iron	
302 51 1100 01	200	Cast iron	
302 51 0701 01	80	Stainless steel	
302 51 0801 01	100	Stainless steel	
302 51 1001 01	150	Stainless steel	
302 51 1101 01	200	Stainless steel	

*Use two union connectors

ALUMINUM REDUCING FLANGE



All flanges contain bolts and flange gasket

AIRpipe	BSP	DN	SIZE
302 71 0706 01	63	80	
302 71 0806 01	63	100	
302 71 0807 01	80	63	
302 71 0807 01	80	100	
302 71 0907 01	80	125	
302 71 0708 01	100	80	
302 71 0908 01	100	125	
302 71 1008 01	100	150	
302 71 0910 01	125	125	

FLANGE



All flanges contain bolts and flange gasket

AIRpipe	BSP	DN	SIZE
302 70 0600 01	63	65	
302 70 0700 01	80	80	
302 70 0800 01	100	100	
302 70 1000 01	150	150	
302 70 1100 01	200	200	

FLANGE(CAST IRON) FEMALE THREAD



All flanges contain bolts and flange gasket

AIRpipe	BSP	DN	SIZE
302 79 0202 01	25	1"	
302 79 0404 01	40	1 1/4"	
302 79 0505 01	50	2"	
302 79 0602 01	65	1"	
302 79 0804 01	65	1 1/4"	
302 79 0805 01	65	2"	
302 79 0702 01	80	1"	
302 79 0704 01	80	1 1/2"	
302 79 0705 01	80	2"	
302 79 0708 01	80	2 1/2"	
302 79 0804 01	100	1 1/4"	
302 79 0805 01	100	2"	
302 79 1002 01	150	1"	
302 79 1004 01	150	1 1/4"	
302 79 1005 01	150	2"	
302 79 1006 01	150	2 1/4"	
302 79 1007 01	150	3"	

FLANGE(STAINLESS STEEL) FEMALE THREAD



All flanges contain bolts and flange gasket

AIRpipe	BSP	DN	SIZE
302 70 0202 01	25	1"	
302 70 0404 01	40	1 1/4"	
302 70 0505 01	50	2"	
302 70 0602 01	65	1"	
302 70 0804 01	65	1 1/4"	
302 70 0805 01	65	2"	
302 70 0702 01	80	1"	
302 70 0704 01	80	1 1/2"	
302 70 0705 01	80	2"	
302 70 0708 01	80	2 1/2"	
302 70 0804 01	100	1 1/4"	
302 70 0805 01	100	2"	
302 70 0806 01	100	2 1/4"	
302 70 1004 01	150	1 1/4"	
302 70 1005 01	150	2"	
302 70 1006 01	150	2 1/2"	
302 70 1007 01	150	3"	

FLEXIBLE HOSES



Straight connection, Rubber

AIRpipe	DN	Length (MM)
302 55 0100 04	20	570
302 55 0200 04	25	570
302 55 0400 04	40	800
302 55 0500 04	50	600

*Unions connectors Included

30°Angle connection, Rubber



AIRpipe	DN	Length (MM)
302 55 0401 04	40	1200
302 55 0501 04	50	1380
301 55 0601 01	63	1200
301 55 0701 01	80	1700
301 55 0801 01	100	

FIXTURE CLAMPS & ACCESSORIES

Clamps, Plastic

AIRpipe	
BSP	DN
302 22 0100 01	20
302 22 0200 01	25
302 22 0400 01	40
302 22 0500 01	50
302 22 0600 01	63
302 22 0700 01	80
302 22 0800 01	100

Steel

AIRpipe	DN
302 22 0401 01	40
302 22 0501 01	50
302 22 0601 01	63
302 22 0701 01	80
302 22 0801 01	100
302 22 1001 01	150
302 22 1101 01	200

CLAMP SPACER

AIRpipe	DN
302 27 0001 01	20/25
302 27 0002 01	40/50/63

VORTEX FLOW METER

AIRpipe	
BSP	DN
302 82 0100 02	20
302 82 0200 02	25
302 82 0400 01	40
302 82 0500 02	50
*Union connectors included	
302 82 0600 01	63
302 82 0700 01	80
302 82 0800 01	100
302 82 1000 01	150
302 82 1100 01	200

*Needs two flange pipe connectors.

Type above: No output, built-in LCD Display with 3.6V LI-battery. For remote connection, please contact your sales.

THREADED ADAPTORS

Aluminum, Male Thread
*Male Thread

AIRpipe	BSP		
301 31 0000 01		1/2"	1/2"
301 31 0100 01		3/4"	3/4"
301 31 0200 01		1"	1"
301 31 0400 01		1 1/2"	1 1/2"
301 31 0500 01		2"	2"

Aluminum, Male Thread
*Female Thread

AIRpipe	BSP		
301 31 0400 02		1 1/2"	1"
301 31 0500 02		2"	1"
301 31 0500 03		2"	1 1/2"
301 31 0600 01		2 1/2"	1"
301 31 0600 02		2 1/2"	2"
301 31 0700 01		3"	1"
301 31 0700 02		3"	1 1/2"
301 31 0700 03		3"	2"
301 31 0700 04		3"	2 1/2"
302 31 0000 04		1/2"	1/2"
302 31 0000 03		1/2"	3/4"
302 31 0100 03		3/4"	1/2"
302 31 0200 03		1"	1/2"

Brass, Male Thread
*Male Thread

AIRpipe	BSP		
302 31 0000 02		1/2"	1/4"
302 31 0100 02		3/4"	1/2"
302 31 0200 02		1"	3/4"

PRESSURE METER

AIRpipe	BSP	
301 34 0001 01		Male 1/2", (shock resistance), 0-1.5mpa, 1.6grade
301 34 0001 02		Male 1/2", (Non-shock resistance), 0-1.5mpa, 1.6grade
301 34 0001 03		Female 1/2"-Male 1/2", copper shock absorption pipe

ATMOLYSIS BAG

AIRpipe	BSP	Length (MM)
301 85 0001 01		200
301 85 0002 01		300
301 85 0003 01		400

SAMPLE BOX

AIRpipe	302 46 0001 01	200x270x190mm
----------------	----------------	---------------

TOOL BOX

AIRpipe	301 45 0001 02	460x330x140mm
----------------	----------------	---------------

DRILL (TAPPER)

AIRpipe	DN	
301 35 0006 01		14MM
301 35 0006 02		19MM
301 35 0006 03		25MM
301 35 0006 04		38MM
301 35 0006 05		51MM
301 35 0006 06		16MM
301 35 0006 07		22MM

DRILL HOLDER

AIRpipe	DN	
301 35 0005 01		14-30
301 35 0005 02		32-152

MARKER

AIRpipe	120 44 0005 02
----------------	----------------

HOLE DEBURRER

AIRpipe	DN	
301 35 0004 01		20-200

ALUMINUM PIPE DEBURRER

AIRpipe	DN	
301 35 0003 01		20-50

SPANNERS

AIRpipe	301 35 0007 01
----------------	----------------

ALUMINUM PIPE CUTTER

AIRpipe	DN	
301 35 0002 02		Aluminum pipe cutter,20-63
301 35 0002 03		Aluminum pipe cutter,40-100
301 35 0002 04		0040Aluminum pipe cutter blade
301 35 0002 05		0140Aluminum pipe cutter blade

ELECTRIC PIPE CUTTER

AIRpipe	DN	
301 35 0001 01		63-200

FIXING BOLTS

AIRpipe	DN	
301 33 0004 01		M8*60
301 33 0004 02		M8*60
301 33 0004 03		M8*70

SQUARE STEEL

AIRpipe	Length (MM)	
301 33 0001 01		3000

ADJUSTABLE BRACKET

Complete With Wall Expansion Bolts		
AIRpipe	Length (MM)	to suit
301 32 0004 01	1200-2400	Threaded
301 32 0005 01	1800-2000	Flange

GRIDER CLAMP

AIRpipe	DN	
301 33 0003 01		M8

SQUARE STEEL CLAMP

AIRpipe	301 33 0002 01
----------------	----------------

PIPE BENDING TOOL

AIRpipe	DN	
301 47 0001 01		20
301 47 0002 01		25

*Bending Angle: MAX.90°

M8 STUDDING

AIRpipe	Length (MM)	
301 33 0006 01		40
301 33 0005 01		3000

SELF TAP SCREWS

Complete With Plastic Wall Plugs		
AIRpipe	DN	
301 33 0008 01		M5.5*35
301 33 0008 02		M5.5*60
301 33 0008 01		M6*60

WALL MOUNTED BRACKET

Complete With Wall Expansion Bolts		
AIRpipe	Length (MM)	
301 32 0000 01		300
301 32 0001 01		500
301 32 0002 01		1200
301 32 0006 01		Suit to DN150/ DN200 pipe

UNIVERSAL BEAM SUSPENDER

AIRpipe	DN	
301 33 0014 01		M6 8

FIXTURE CLAMPS & ACCESSORIES

Universal Clamp		
AIRpipe	DN	
301 33 0013 01		1"
301 33 0013 02		2"

WIRE SUSPENSION CABLE

AIRpipe	Length (MM)	
301 33 0010 02		Φ12

Wire Rope Clamp		
301 33 0012 02		Φ12 wire Cable
301 33 0011 02		Φ12 wire Cable

LUGGING MACHINE

AIRpipe	DN	
120 44 0004 09		Charge type and hand held hydraulic machine, for 63-200

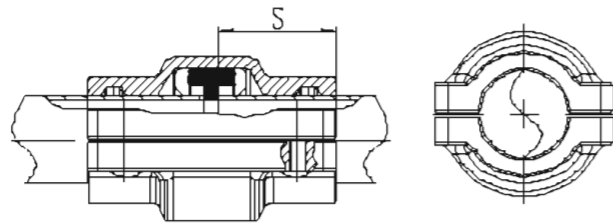
* Comes With All Jaw Sets

Superior Reliability!

Quick and Easy Installation



Insertion Depth S For DN20-DN50 Connector



DN	Insertion depth S (mm)
20	29
25	29
40	39
50	39

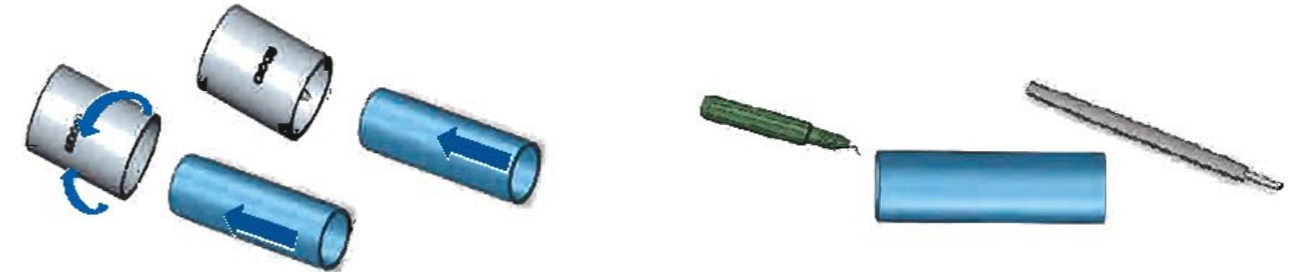
• "S" denotes the insertion depth of the pipe into the connector.

Installation Guide for DN20-DN50

- 01** Mark the pipe with a marker pen as shown below :
- 02** Insert the marked pipe into the connector :
- 03** Bring the second pipe to the connector and slide up to the marked insertion depth
- 04** A portion of the marked lines should remain visible after the pipe is inserted into the connector.
- 05** Hand Tighten the screws with an Allen key. Max. Torque: 8Nm.
- 06** Tighten the screws in an "X" pattern. To disassemble, perform the same operations in reverse order.

Deburr & Chamfer The Outer and Inner Edges Before Installation

- Use 301 35 0003 01 for DN20-DN50 to chamfer the outer edges and also deburr the inner end.
- Use a file for DN63-DN200 to chamfer the outer edges ; make use of a deburring tool to deburr the inside of the pipe end.



Installation Guide for DN63-DN200

- 01**

Slide the seal over the edge of the pipe so that it sits flush with the lugged edge.
- 02**

Insert the second pipe into the seal until the seal and the lugged edge are flush.
- 03**

Position the clamp over the seal.
- 04**

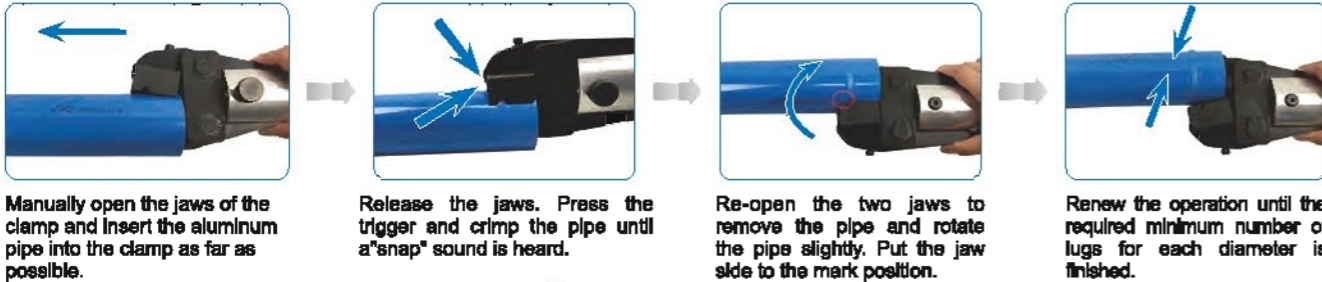
Tighten the pre-fitted screws by hand at first.
- 05**

Pull the pipe back towards the outside of the clamshell to complete alignment.
- 06**

Fully tighten the clamp screws. Min Torque: 10Nm. Max Torque: 44.5Nm. Clamshell halves should be flush with each other.
- 07**

For effective assembly, tighten the screws in an "X" pattern. To disassemble, perform the same operation in reverse order.

Hand-held hydraulic lugging machine operation requirements



Number of lugs for each diameter:

AIRPIPE	DN63	DN80	DN100	DN150	DN200
	5	6	6	9	12

Note: Do not overlap the lugs!

DN	H(mm)
63	3.0-3.3
80	3.0-3.3
100	3.0-3.3
150	3.0-3.3
200	3.0-3.3

Sizing Chart for Quick Drops

Drill	Drill Holder	DN(NMM)	Quick Drops (PN)
301 35 0005 01	301 35 0008 08	φ16	302 10 0201 04 302 10 0202 03 302 11 0200 03 302 11 0401 03
301 35 0005 01	301 35 0008 07	φ22	302 10 0401 04 302 10 0402 04 302 11 0400 03 302 10 0602 01 302 10 0701 01 302 10 0702 01
301 35 0005 01	301 35 0008 03	φ26	302 10 0801 01 302 10 0802 01 302 10 0801 01 302 10 1002 01 302 10 1102 01
301 35 0005 01	301 35 0008 03	φ26	302 10 0801 01 302 10 0802 01 302 10 1001 01 302 11 0301 01 302 11 0700 01 302 11 0701 01
301 35 0005 02	301 35 0008 04	φ28	302 11 0500 01 302 11 0501 01 302 11 0900 01
301 35 0005 02	301 35 0008 04	φ28	302 10 0804 01
301 35 0005 02	301 35 0008 05	φ31	302 10 1004 01 302 10 1006 01 302 10 1104 01 302 10 1105 01

- The following table is based on a closed-loop pipe system.
- Working pressure is 8bar and pressure drop is 0.4bar, flow speed not taken into account.

Flow N m ³ /h	Length									
	50M	100M	150M	300M	500M	750M	1000M	1300M	1600M	2000M
10	20	20	20	20	20	20	20	25	25	25
30	20	20	20	25	25	25	25	25	25	40
50	20	25	25	25	25	25	25	40	40	40
70	25	25	25	25	40	40	40	40	40	40
100	25	25	25	40	40	40	40	40	40	50
150	25	40	40	40	40	40	40	60	50	50
250	40	40	40	40	50	50	50	50	50	50
350	40	40	40	50	50	50	50	63	63	63
500	40	40	50	50	50	63	63	63	63	63
750	40	50	50	50	63	63	63	80	50	50
1000	50	50	63	63	63	80	80	100	100	100
1250	50	50	63	63	63	80	100	100	100	100
1500	50	63	63	63	63	100	100	100	100	100
1750	63	63	63	63	63	100	100	100	100	150
2000	63	63	63	63	63	100	100	100	100	150
2500	63	63	63	63	63	100	100	100	150	150
3000	63	63	63	63	63	100	100	100	150	150
3500	63	63	63	63	63	100	100	100	150	150
4000	63	63	63	63	63	100	100	100	150	150
4500	63	63	63	63	63	100	100	100	150	150
5000	63	63	63	63	63	100	100	100	150	150
5500	63	63	63	63	63	100	100	100	150	150
6000	63	63	63	63	63	100	100	100	150	150
6500	63	63	63	63	63	100	100	100	150	150
7000	63	63	63	63	63	100	100	100	150	150
7500	63	63	63	63	63	100	100	100	150	150
8000	63	63	63	63	63	100	100	100	150	150
8500	63	63	63	63	63	100	100	100	150	150
9000	63	63	63	63	63	100	100	100	150	150
9500	63	63	63	63	63	100	100	100	150	150
10000	63	63	63	63	63	100	100	100	150	150
10500	63	63	63	63	63	100	100	100	150	150
11000	63	63	63	63	63	100	100	100	150	150
11500	63	63	63	63	63	100	100	100	150	150
12000	63	63	63	63	63	100	100	100	150	150

Technical Specifications

- Max. working pressure: 15bar (-20°C ~ +80°C), 16bar (-20°C ~ +45°C)
Max. working pressure for DN200 is 13bar.
- Vacuum: 1mbar (absolute pressure).
- Working temperature: -20°C ~ +80°C.
- Suitable fluids: compressed air, oil-free or lubricated, wet, vacuum, inert gases.
- Fireproof and suitable for outdoor applications.

Qualification & Standards

2014/68/EU, ASME B31.1, TUV, GB/T4437.1-2000, EN755-8, TS, U64, ISO 8573-1



Engineered for Superior Performance

- We are committed to provide superior products and service.
- R&D is a continuous process linked to real-world conditions & market feedback.
- Always customer oriented, from design production to sales and service.



we are at your SERVICE

